



eBioDiv

eBioDiv Matching Service

Linking material citations to specimens

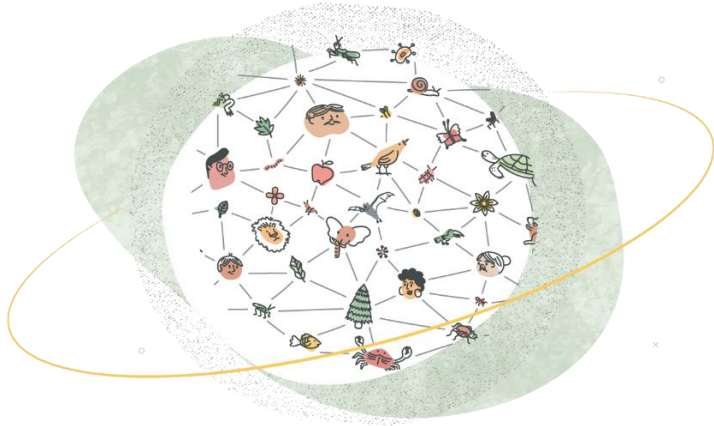
Julia Giora

Jonas Castro



GBIF

A world in which the best possible biodiversity data underpins research, policy, and decisions.





TreatmentBank

Swiss Plazi

To liberate data from scholarly publications, and convert, enhance, link, store, and disseminate it as **Findable, Accessible, Interoperable, and Reusable (FAIR)** data.





eBioDiv

Matching Service

Allows users to match material
citations contained in the academic
literature...

...to the respective specimens in
natural history collections.



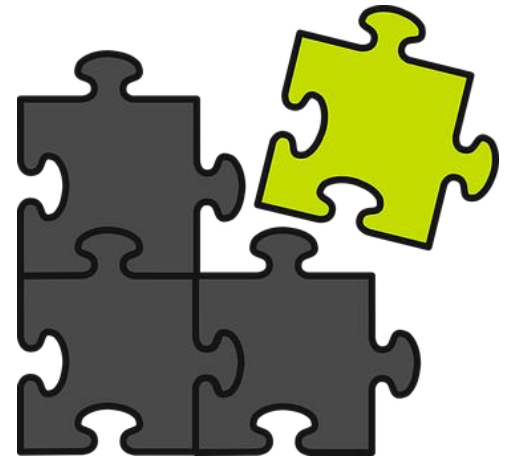


eBioDiv

Matching Service

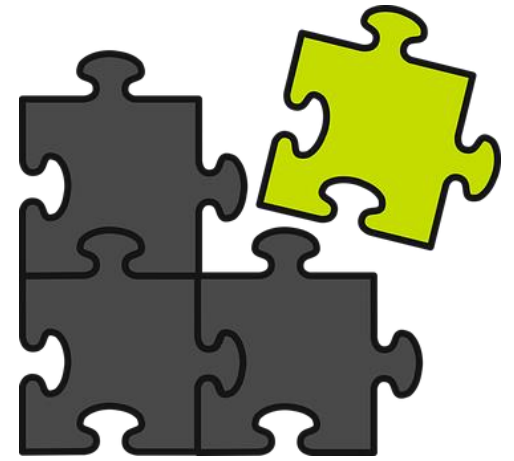
To facilitate the task, a semi-automatic matching approach is used.

Users are presented with lists of possible matches.





eBioDiv



Matching Service

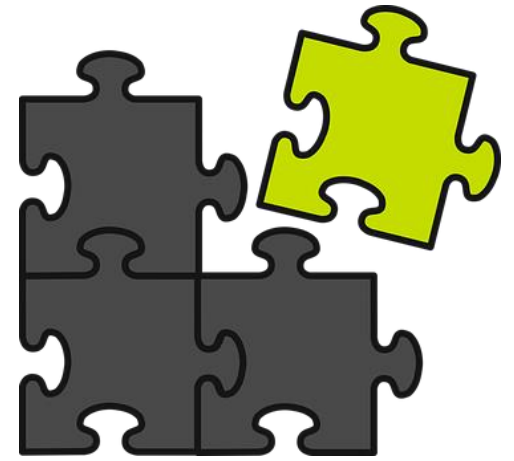
Over time, the matching decisions taken by the users will be used as input to further refine the algorithm.

Increasing the efficiency of the matching tool.





eBioDiv



Let's match!

